

TIP #	2008-26	TDOT PIN#	111019.00	PRIORITY		LEAD AGENCY	Elizabethton
COUNTY/CITY	Carter/Elizabethton	LENGTH	Approximately 200ft.	L RTP#		CONFORMITY	Consistent with Plan Attainment
PROJECT NAME	Elizabethton Historic Covered Bridge		TOTAL PROJECT COST	\$400,000			
TERMINI OR INTERSECTION	Elizabethton Covered Bridge over the Doe River						
PROJECT DESCRIPTION	Rehabilitation of a historic covered bridge for use as a pedestrian facility. Project includes the replacement of steel rods and thrust bearings, replacement of miscellaneous timber elements, repair and repainting the clapboard siding and the installation of a fire-prevention						

FISCAL YEAR	TYPE OF WORK	FUNDING TYPE	TOTAL FUNDS	FED FUNDS	STATE FUNDS	LOCAL FUNDS
2008	PE, ROW, CN	NHCB*	\$400,000	\$320,000		\$80,000

AMENDMENT #	ADJUSTMENT #	REMARKS
		National Historic Covered Bridge (Section 1804, SAFETEA-LU)

### Location Map



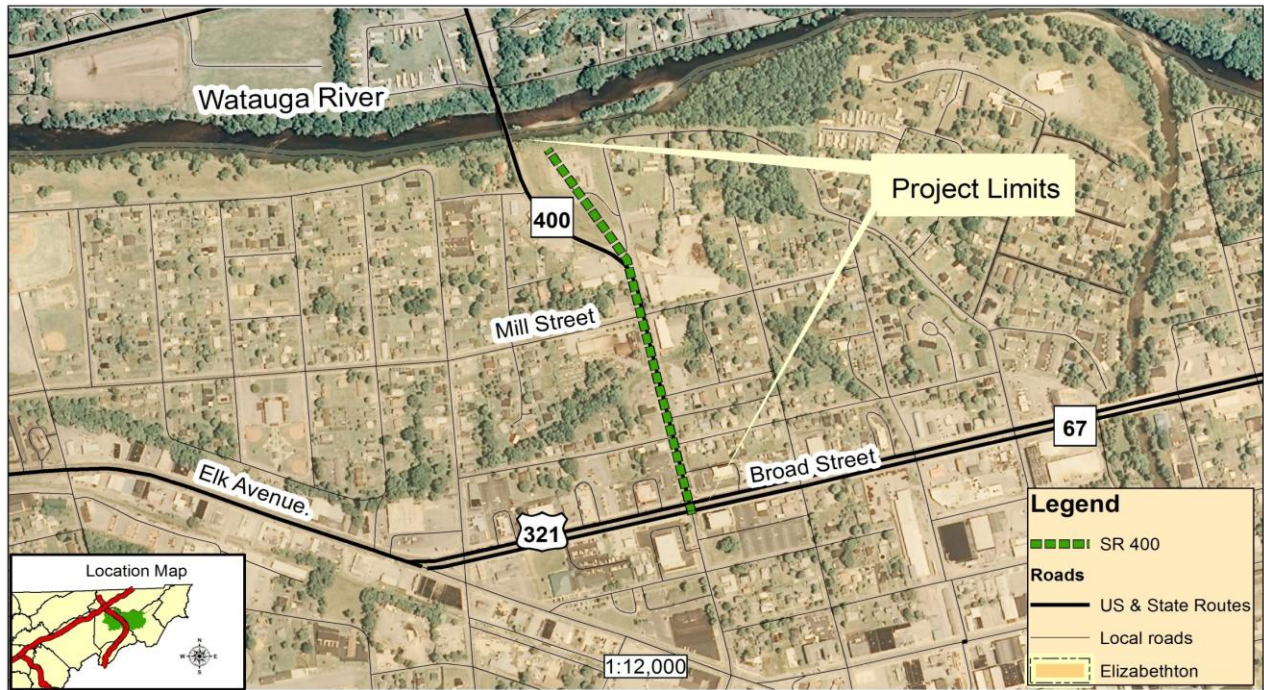
Elizabethton Covered Bridge Johnson City MTPO 2008 - 2011 TIP

TIP #	2008-19	TDOT PIN#	43975.03	PRIORITY		LEAD AGENCY	TDOT
COUNTY	Carter	LENGTH	.2 mi	L RTP#	E+C; 13	CONFORMITY	Attainment
PROJECT NAME	SR 400 Lynn Avenue		TOTAL PROJECT COST	\$3,200,000			
TERMINI OR INTERSECTION	HPP ID# TN024/TEA21 - SR 400 (Lynn Avenue) from east of Mill street to south of SR 67 / US 321(Broad Street)						
PROJECT DESCRIPTION	Realign and widen from 4 to 5 lanes between US 321 and Watauga River						

FISCAL YEAR	TYPE OF WORK	FUNDING TYPE	TOTAL FUNDS	FED FUNDS	STATE FUNDS	LOCAL FUNDS
2008	ROW	HPP TN024	\$700,000	\$560,000	\$ 140,000	
2009	CN	STP	\$1,300,000	\$1,040,000	\$ 260,000	

AMENDMENT #		ADJUSTMENT #		REMARKS	This is a portion of the project.
-------------	--	--------------	--	---------	-----------------------------------

Location Map



SR 400 (Lynn Ave.) Improvements Johnson City MTPO 2008 - 2011 TIP